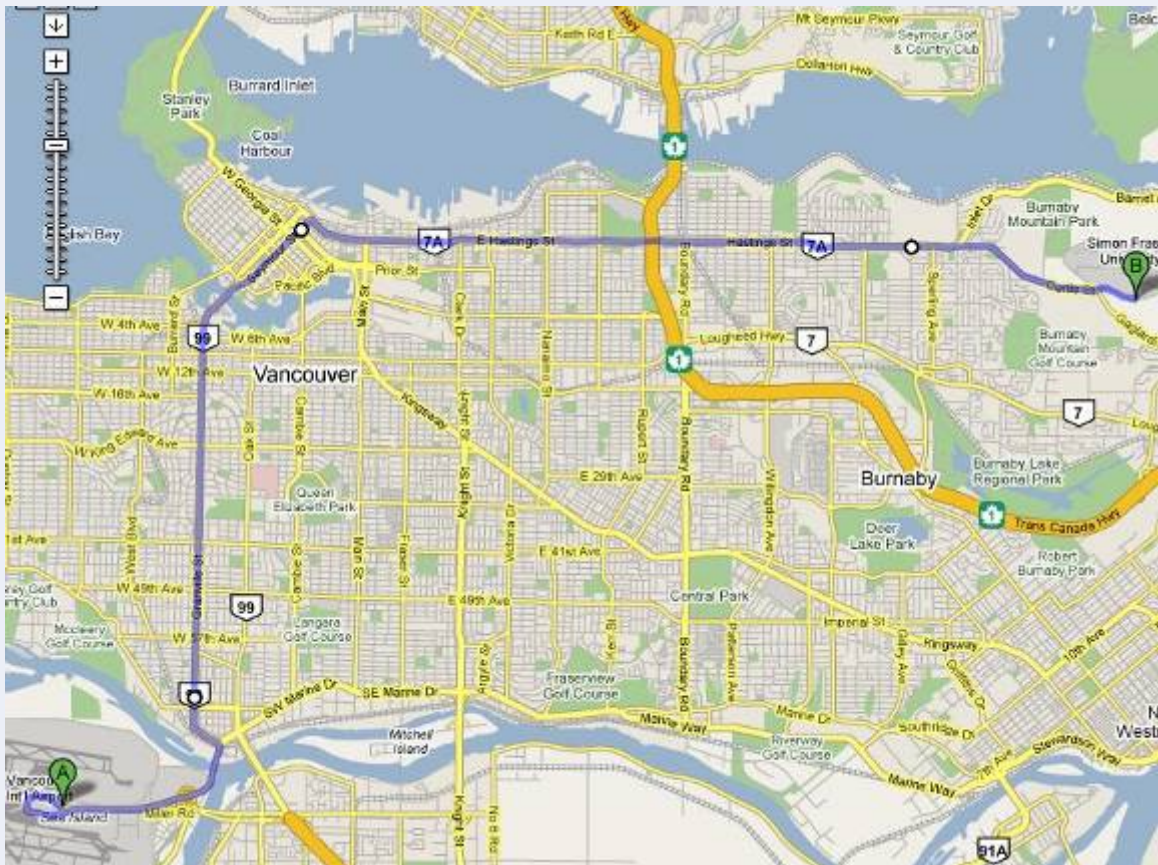


## 4D LABS VISITOR INFORMATION

### DIRECTIONS TO SFU and 4D LABS:

From Vancouver International Airport, YVR (approximately 1 hour):

1. Leave airport via Grant McConachie Way
2. Grant McConachie Way becomes Arthur Laing Bridge
3. Take the off ramp to City Centre/Granville St.
4. Merge onto Southwest Marine Dr.
5. Continue on Granville St. (Northbound, approximately 20 min.)
6. Granville St. becomes Granville St. Bridge
7. Merge onto Seymour St.
8. Turn right at West Hastings St.
9. Continue on West Hastings St. (Eastbound, approximately 30 min.)
10. Watch for signs directing traffic to SFU. Past Sperling Ave, Hastings St. forks. Right lane leads to Burnaby Mountain Pkwy/SFU
11. Continue on Burnaby Mountain Pkwy
12. At intersection, proceed straight on to University Dr. East



From Vancouver International Airport, YVR, route bypassing downtown Vancouver (approximately 50 min):

1. Leave airport via Grant McConachie Way
2. Grant McConachie Way becomes Arthur Laing Bridge
3. Merge onto Southwest Marine Dr, eastbound.
4. Continue on Southwest Marine Dr. (Eastbound, approximately 15 min.)
5. Turn left at Boundary Rd.
6. Continue on Boundary Rd (Northbound, approximately 15min.
7. Turn right at West Hastings St.
8. Continue on West Hastings St. (Eastbound, approximately 10 min.)
9. Watch for signs directing traffic to SFU. Past Sperling Ave, Hastings St. forks. Right lane leads to Burnaby Mountain Pkwy/SFU
10. Continue on Burnaby Mountain Pkwy
11. At intersection, proceed straight on to University Dr. East



From the Canada/US Border (Douglas or Peach Arch Crossing) (approximately 1 hour):

(From Peach Arch Crossing)

1. Head north on HWY-99 N toward Peace Park Dr.
2. Take Exit 2 toward White Rock/Hope/HWY-99A/Cloverdale
3. At the roundabout, take the first exit onto 8 Ave.
4. Turn left at 176 St.
5. Follow directions below

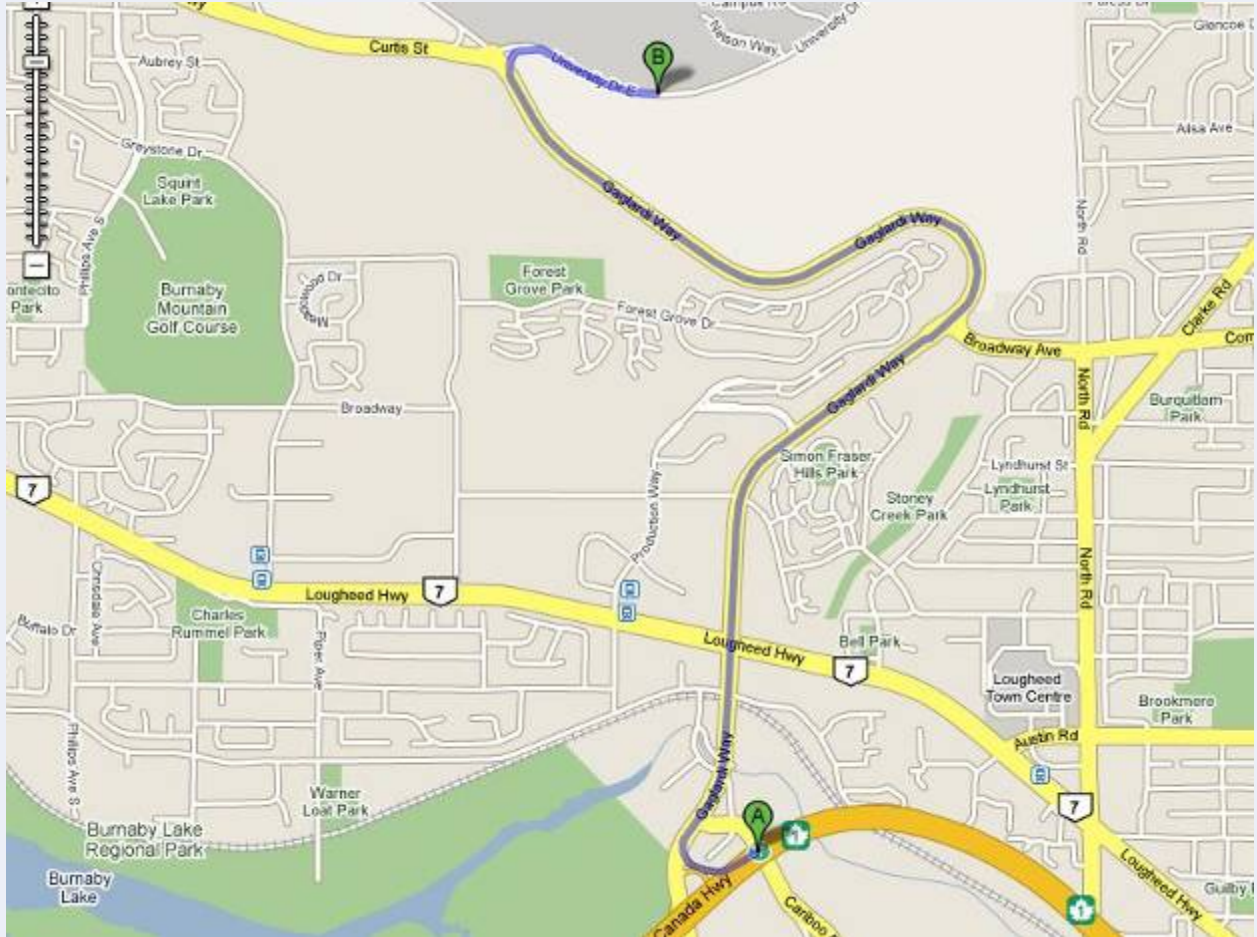
(From Douglas Crossing)

1. Continue on 176 St. (Northbound, approximately 25 min.)
2. Take the ramp to Vancouver, HWY-1 Westbound
3. Proceed on HWY-1 Westbound (approximately 25 min.)
3. Take Exit 37 toward Gaglardi Way
4. Continue on Gaglardi Way (Northbound, approximately 10 min.)
5. Follow right exit toward University Dr. East (see next page for detailed map)



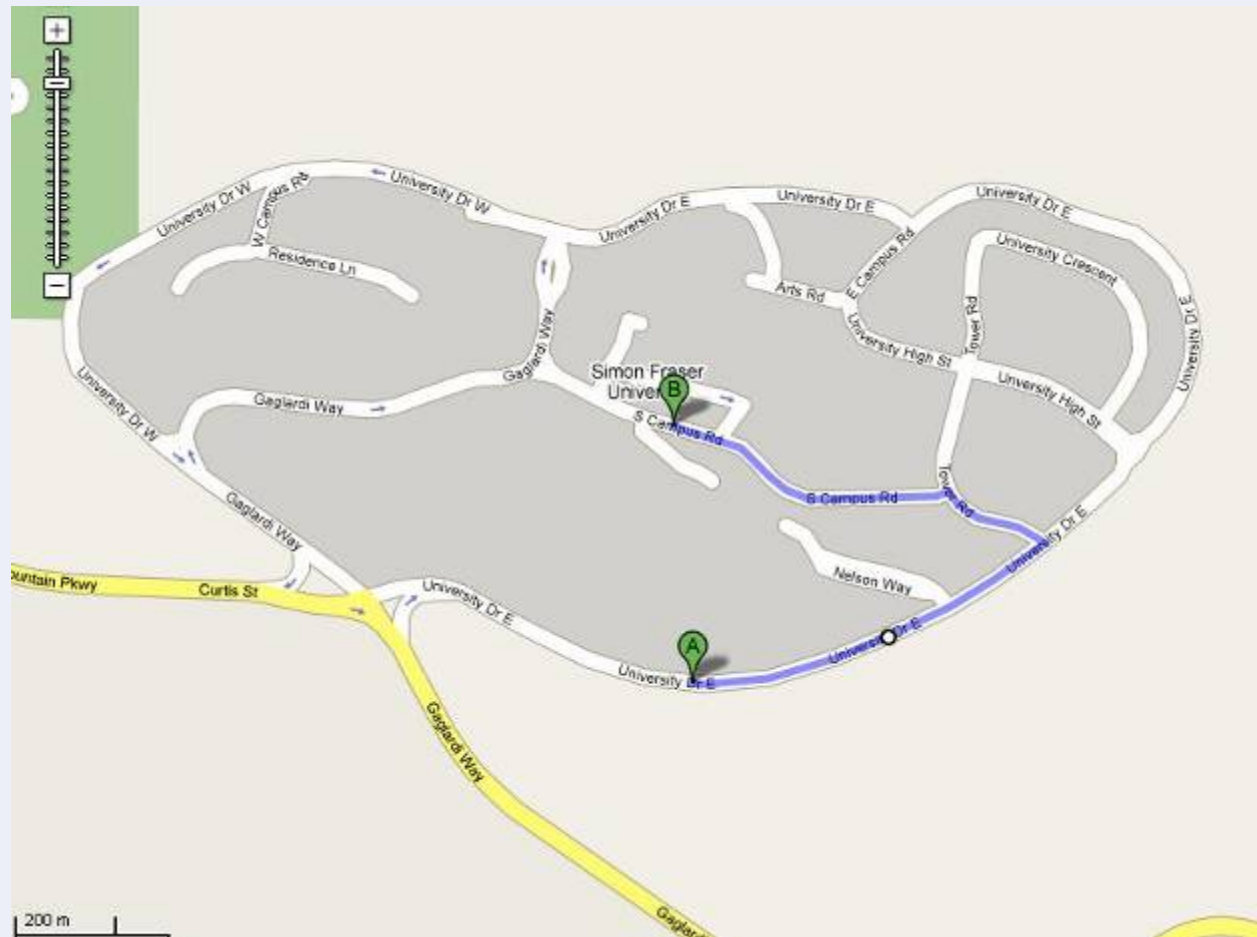
From HWY-1, East or West bound:

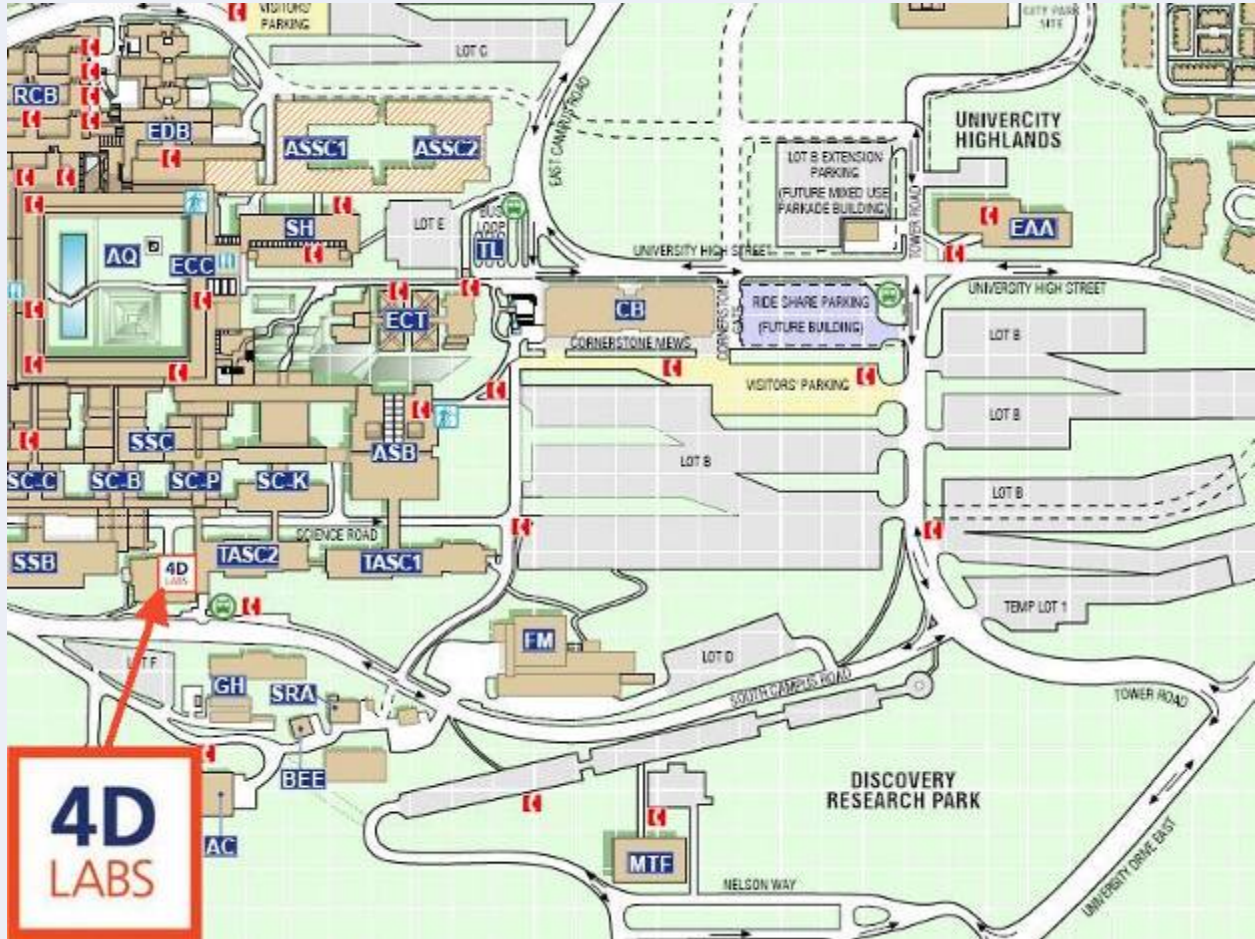
1. Take Exit 37 toward Gaglardi Way
2. Continue on Gaglardi Way (Northbound, approximately 10 min.)
3. Follow right exit toward University Dr. East



DIRECTIONS TO 4D LABS (FROM UNIVERSITY DR. EAST):

1. Head East on University Dr. East
2. Turn left at Tower Rd.
3. Turn left at South Campus Rd.
4. Stop in front of the TASC 2 building in right hand parking lane
5. Call our office (contact information listed below) and we will assist to identify appropriate parking
6. If you do not have a cell phone, proceed into the TASC 2 building, walk up to the second floor (level 7000), and enter 4D LABS on your left





Additional information is available at [www.4dlabs.ca](http://www.4dlabs.ca)  
and [www.4dlabs.ca/findus.html](http://www.4dlabs.ca/findus.html)

## NEARBY HOTELS:

### SIMON FRASER HOTEL

Address: Residence Administration Building A  
Simon Fraser University  
8888 University Drive  
Burnaby, BC, V5A 1S6

Phone: (778) 782-4503

Email: [confacom@sfu.ca](mailto:confacom@sfu.ca)

Website: <http://www.sfu.ca/conference-accommodation/index.html>

### EXECUTIVE PLAZA HOTEL

Address: Executive Plaza Hotel & Conference Centre Coquitlam  
405 North Rd.  
Coquitlam, BC V3K 3V9

Phone: (604) 936-9399

Email: [reservationsc@executivehotels.net](mailto:reservationsc@executivehotels.net)

Website: <http://www.executivehotels.net/coquitlam/>

### THE FAIRMONT HOTEL VANCOUVER

Address: The Fairmont Hotel Vancouver  
900 West Georgia St.  
Vancouver, BC, V6C 2W6

Phone: (604) 684-3131

Email: [concierge@fairmont.com](mailto:concierge@fairmont.com)

Website: <http://www.fairmont.com/hotelvancouver/>